

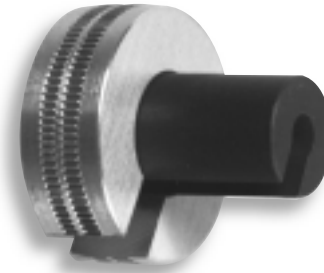
# SPECIALIZED TUBING TOOLS

## NYCLAMP Screw-Back Tool

The nylon screw-back tool is designed to manually install the helical clamps over the bulge of the tubulation. The screw-back tool is slipped onto the tubing so as to push the NYCLMP towards the tubulation bulge until the bulge is engaged. By rotating the screw-back tool a few revolutions, it will screw the NYCLMP up over the bulge. Continue turning the knurled handle on the screw-back tool until the clamp is located 80% over the bulge (on the side of the bulge away from the tubing).

The versatile long-handled version, Model NCSBTL3, is especially suited for installing the NYCLMPs in hard to reach locations.

The short-handled version, Model NCSBTL2, is used on Scanivalve's tubulations and panels where space is available.



**Model NCSBTL2-063**



**Model NCSBTL3-063**

To order, specify ScanCo #	
	NCSBTL2-063
	NCSBTL2-125
	NCSBTL2-125HW
	NCSBTL3-063
	NCSBTL3-125
	NCSBTL3-125HW

Model Tubulation Size

**Note:** When Heavy Walled (HW) tubing is used, specify the HW Screw-back tool listed in the table.

