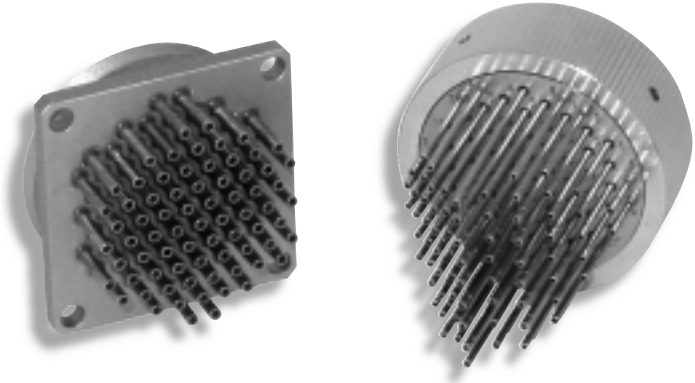


# PNEUMATIC CONNECTORS—ZOC (500 PSI)

This high density 48 or 73 channel connector is a very popular bulkhead quick disconnect containing either .063 inch O.D. tubulations or .040 inch O.D. tubulations. This pneumatic connector is also used on our ZOCTCU Thermal Control Units. It can be used up to 500 psi.

## To Order, Specify:

73	ZOC	M	063
No. of Tubes	Model	Connector Type	Tubulation Size
-48 (.063 only)		M-Male	-063 O.D.
-73 (.040 or .063)		FB-Female Bulkhead	-040 O.D.



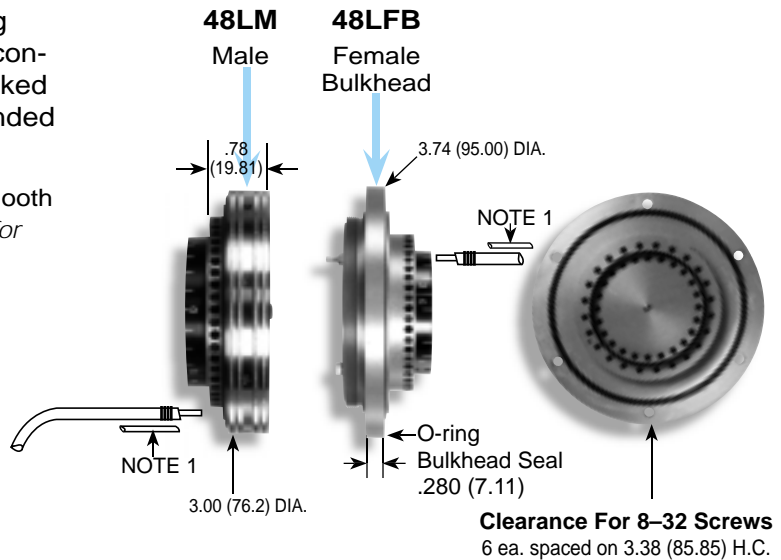
# HIGH PRESSURE "L" CONNECTORS (1500 PSI)

The 48L series connectors are ideal for making quick disconnects at test break points. These connectors accept stainless steel tubing that is locked via a set screw. This tubing must be smooth ended .063 stainless steel tubing.

**Note 1:** Tubing supplied by customer must have smooth end, or order ScanCo #TUBN-063-X. (See page 3 for reference.)

## To Order, Specify:

ScanCo #	48	L	M
	No. of Tubulations	Model	Connector Type
			M-Male
			FB-Female Bulkhead



Caps are available to blank off half of the connector.  
To cap off 48LM connector, order no. 6245-1.  
To cap off 48LFB connector, order no. 6244-1.